

Panasonic

HDD Viewer

Operating Instructions

Model No. **WJ-ND200**



Before attempting to connect or operate this product,
please read these instructions carefully and save this manual for future use.

Limitation of Liability

THIS PUBLICATION IS PROVIDED "AS IS" WITHOUT WARRANTY OF ANY KIND, EITHER EXPRESS OR IMPLIED, INCLUDING BUT NOT LIMITED TO, THE IMPLIED WARRANTIES OF MERCHANTABILITY, FITNESS FOR ANY PARTICULAR PURPOSE, OR NON-INFRINGEMENT OF THE THIRD PARTY'S RIGHT. THIS PUBLICATION COULD INCLUDE TECHNICAL INACCURACIES OR TYPOGRAPHICAL ERRORS. CHANGES ARE ADDED TO THE INFORMATION HEREIN, AT ANY TIME, FOR THE IMPROVEMENTS OF THIS PUBLICATION AND/OR THE CORRESPONDING PRODUCT (S).

Disclaimer of Warranty

IN NO EVENT SHALL MATSUSHITA ELECTRIC INDUSTRIAL CO., LTD. BE LIABLE TO ANY PARTY OR ANY PERSON, EXCEPT FOR REPLACEMENT OR REASONABLE MAINTENANCE OF THE PRODUCT, FOR THE CASES, INCLUDING BUT NOT LIMITED TO BELOW:

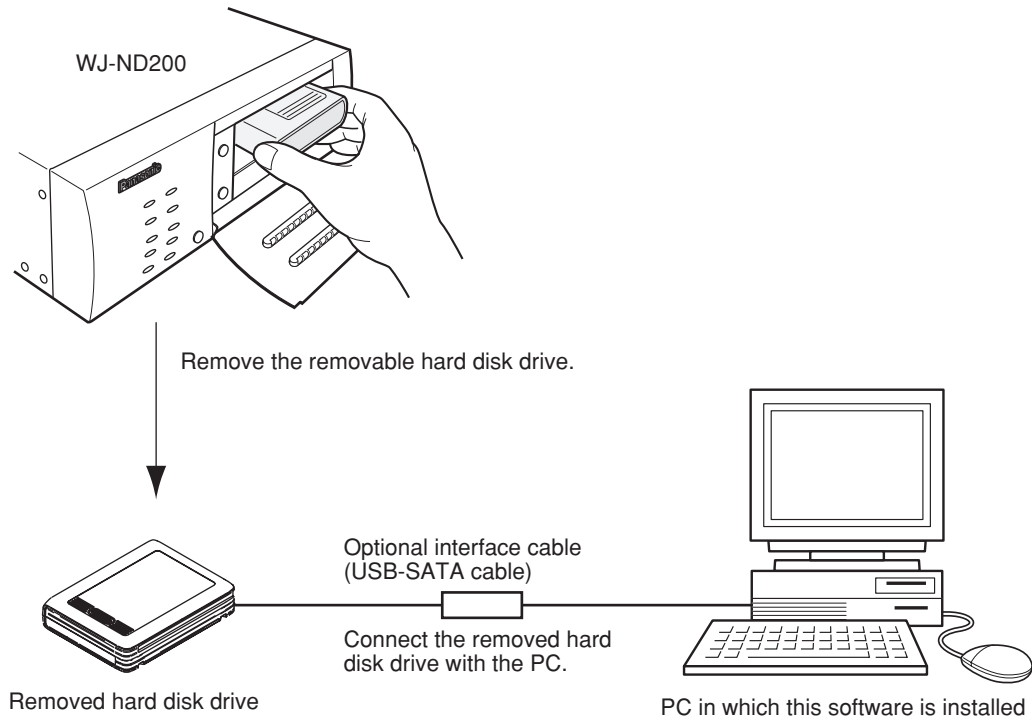
- (1) ANY DAMAGE AND LOSS, INCLUDING WITHOUT LIMITATION, DIRECT OR INDIRECT, SPECIAL, CONSEQUENTIAL OR EXEMPLARY, ARISING OUT OF OR RELATING TO THE PRODUCT;
- (2) PERSONAL INJURY OR ANY DAMAGE CAUSED BY INAPPROPRIATE USE OR NEGLIGENT OPERATION OF THE USER;
- (3) UNAUTHORIZED DISASSEMBLE, REPAIR OR MODIFICATION OF THE PRODUCT BY THE USER;
- (4) ANY PROBLEM, CONSEQUENTIAL INCONVENIENCE, OR LOSS OR DAMAGE, ARISING OUT OF THE SYSTEM COMBINED BY THE DEVICES OF THIRD PARTY.
- (5) ANY CLAIM OR ACTION FOR DAMAGES, BROUGHT BY ANY PERSON OR ORGANIZATION BEING A PHOTOGENIC SUBJECT, DUE TO VIOLATION OF PRIVACY WITH THE RESULT OF THAT SURVEILLANCE-CAMERA'S PICTURE, INCLUDING SAVED DATA, FOR SOME REASON, BECOMES PUBLIC OR IS USED FOR THE PURPOSE OTHER THAN SURVEILLANCE

Features

The HDD viewer (Hard Disk Drive Viewer) is the software that can play recorded images on the removable hard disk drive (that is removed from the WJ-ND200 and connected to a PC).

By using this software, playback of recorded images searched using the search filters (such as the time and date filter), saving and printing of the paused playback image are also available.

When the removable hard disk drive is needed to be checked, the removable hard disk drive can be checked using this software.



Note:

Refer to the installation guide or the operating instructions (PDF) for how to remove the hard disk drive from the WJ-ND200.

About copyright and license

This software can be distributed and used only if you agree to the copyright and license agreement of this software. Distributing, copying, disassembling, reverse compiling, reverse engineering, and also exporting in violation of export laws of the software provided with this product are expressly prohibited.

MPEG-4 Visual patent portfolio license

This product is licensed under the MPEG-4 Visual patent portfolio license for the personal and non-commercial use of a consumer for (i) encoding video in compliance with the MPEG-4 Visual Standard ("MPEG-4 Video") and/or (ii) decoding MPEG-4 Video that was encoded by a consumer engaged in a personal and non-commercial activity and/or was obtained from a video provider licensed by MPEG LA to provide MPEG-4 Video. No license is granted or shall be implied for any other use. Additional information including that relating to promotional, internal and commercial uses and licensing may be obtained from MPEG LA, LLC. See <http://www.mpegla.com>.

Trademarks and registered trademarks

- Adobe and Reader are either registered trademarks or trademarks of Adobe Systems Incorporated in the United States and/or other countries.
- Microsoft, Windows, Internet Explorer, and ActiveX are either registered trademarks or trademarks of Microsoft Corporation in the United States and/or other countries.
- Other names of companies and products contained in these operating instructions may be trademarks or registered trademarks of their respective owners.

Abbreviations

The following abbreviations are used in these operating instructions.

Microsoft® Windows® 2000 Professional Service Pack 4 is described as Windows 2000.

Microsoft® Windows® XP Professional SP2 and Microsoft® Windows® XP Home Edition SP2 are described as Windows XP.

System requirements for a PC

It is recommended to operate this software using a PC that meets the following system requirements. If using a PC that does not meet the following system requirements, it may cause problems such as slow imaging or this software becomes inoperable.

OS	Microsoft® Windows® 2000 Professional SP4 Microsoft® Windows® XP Professional SP2 Microsoft® Windows® XP Home Edition SP2
OS Language	English, French, Spanish, German, Italian
CPU	Pentium® 4 3.0 GHz or faster
Memory	512 MB or more
Monitor	1 024 x 768 pixels or more, 24-bit True color or better
Interface	USB port (USB 2.0 compliant)
Required hard disk drive space	200 MB or more
Other	CD-ROM drive: It is necessary to read the operating instructions and use the software on the provided CD-ROM. Adobe® Reader: It is necessary to read the operating instructions on the provided CD-ROM.

Notes:

- This software must be installed or started by the administrator. Otherwise, any problems will not be covered by the warranty.
 - In these operating instructions, the settings are performed on Windows XP as examples.
-

CONTENTS

Limitation of Liability	2
Disclaimer of Warranty	2
Features	3
About copyright and license	3
Trademarks and registered trademarks	4
Abbreviations	4
System requirements for a PC	4
Installing This Software	6
Uninstalling This Software	7
Connect the Removed Hard Disk Drive with the PC	8
Start the Software	9
About the Operation Window	10
Operations Flow	11
Search and Play Recording Event	15
About filtering	15
About displaying the recording event list window	15
How to operate	16
Save the Displayed Paused Playback Image	18
Print the Displayed Paused Playback Image	19
Check the Removal Hard Disk Drive	20
Troubleshooting	21

Installing This Software

Install this software as follows.

Step 1

Insert the provided CD-ROM into the CD-ROM drive on the PC.

Step 2

Double click "hdvsetup.exe" in the "HDD Viewer" folder.
The confirmation window will be displayed.

Step 3

Click the "OK" button and follow the installation wizard to install this software.
The "HDD Viewer" folder will be created (C:\Program Files\Panasonic\WJ-ND200\HDD Viewer) and the necessary files will be copied in it.

When installation is complete, the application will be added to "Programs" in "Start" and the shortcut will be created on the desktop.

Important:

Do not edit, remove, or move the directory path of the files above. Otherwise, this software may not function properly.

Note:

When re-installing this software is needed, the existing software must be uninstalled first.

Uninstalling This Software

If required, uninstall this software as follows.

Step 1

Open "Add or Remove Programs" in "Control Panel".
The "Add or Remove Programs" window will be displayed.

Step 2

Select "HDD Viewer" and click the "Remove" button.

Step 3

Follow the uninstall wizard.

Connect the Removed Hard Disk Drive with the PC

Connect the removed hard disk with the PC in which this software is installed as follows.

Step 1

Remove the removal hard disk drive from the WJ-ND200.

Note:

Refer to the installation guide or the operating instructions (PDF) of the WJ-ND200 for how to remove the removable hard disk drive.

Step 2

Connect the removed hard disk drive and the PC in which this software is installed using an optional interface cable.

Note:

Contact your dealer about the interface cable to be used to connect the removable hard disk drive and the PC.

Step 3

Check if the connected hard disk drive is displayed in "My Computer".

Important:

The connected hard disk drive will be displayed as "Local Disk (*:)"
("*" varies depending on the system configuration of the PC.)

Do not perform the following operations on this local drive.

Otherwise, this hard disk drive may become inoperable on both the WJ-ND200 and the viewer software.

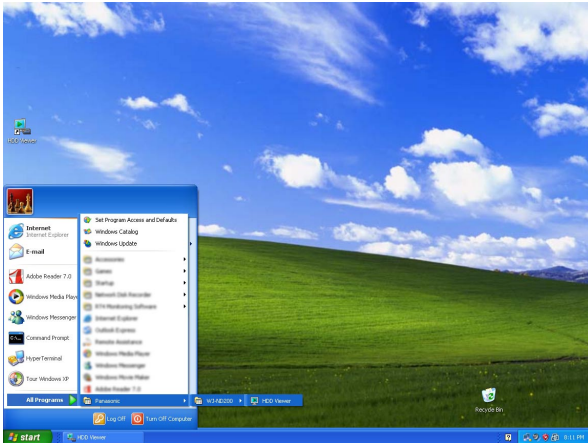
- Deletion of folders and files
 - Move of directories of folders and files
 - Edit of folders and files (contents, attributes, etc.)
 - Defragmentation
 - Formatting
-

Start the Software

Start the software as follows.

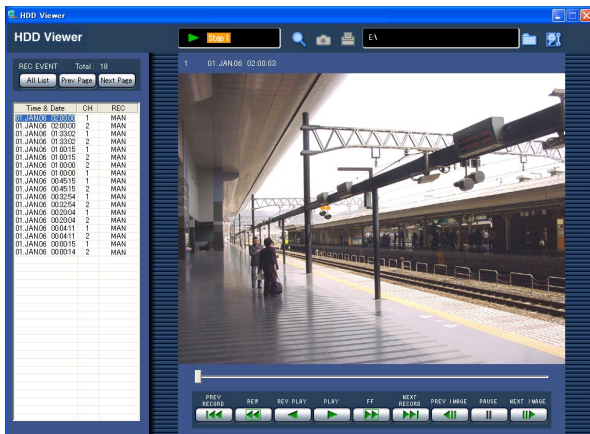
Screenshot 1

Start operation just after the PC is started up.



Screenshot 2

The operation window will be displayed.



Step 1

Select "HDD Viewer" from the "Start" menu ("Start" - "All Programs" - "Panasonic" - "WJ-ND200" - "HDD Viewer") or double click the shortcut icon of "HDD Viewer" on the desktop.

→ The software will start up.

Important:

Log in to the PC as an administrator before starting the software.


Step 2

Click the [HDD select] button, and then select the removal hard disk drive connected with the PC displayed as "Local Disk (*)" under "My Computer".

Note:

"*" varies depending on the system configuration of the PC.

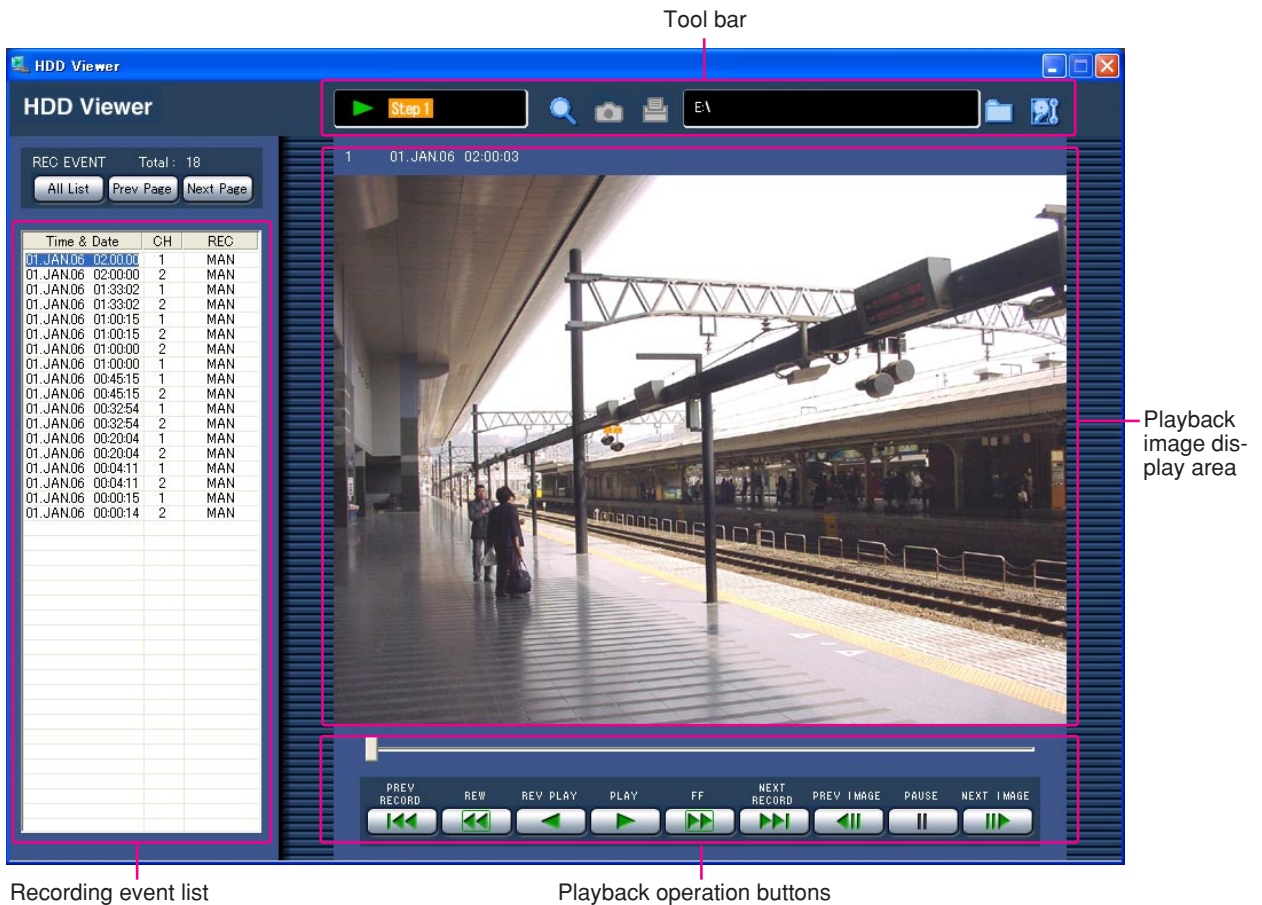
Step 3

Close the window by clicking the  button at the top right of the window to exit the software.

Important:

- When using Windows® XP Professional or Home Edition SP2, it may be possible that the "Windows Security Alert" window is displayed. In this case, click the "Unblock" button on the displayed "Windows Security Alert" window.

About the Operation Window



Tool bar

[Status display area]: Indicates the current playback status.

[Search] button: Click this button to start searching recording events to be played.

[Save] button: Click this button to save the currently displayed paused playback image. (This button works only when the paused playback image is displayed. It doesn't work when the save button is displayed as .)

[Print] button: Click this button to print the currently displayed paused playback image using a printer connected with the PC. (This button works only when the paused playback image is displayed. It doesn't work when the print button is displayed as .)

[HDD select] button (Open button): Click this button to select the connected removal hard disk drive. The path of the selected removable hard disk drive will be displayed on the left side of the HDD select button (HDD path display area).

[HDD check] button: Click this button to start the HDD check.

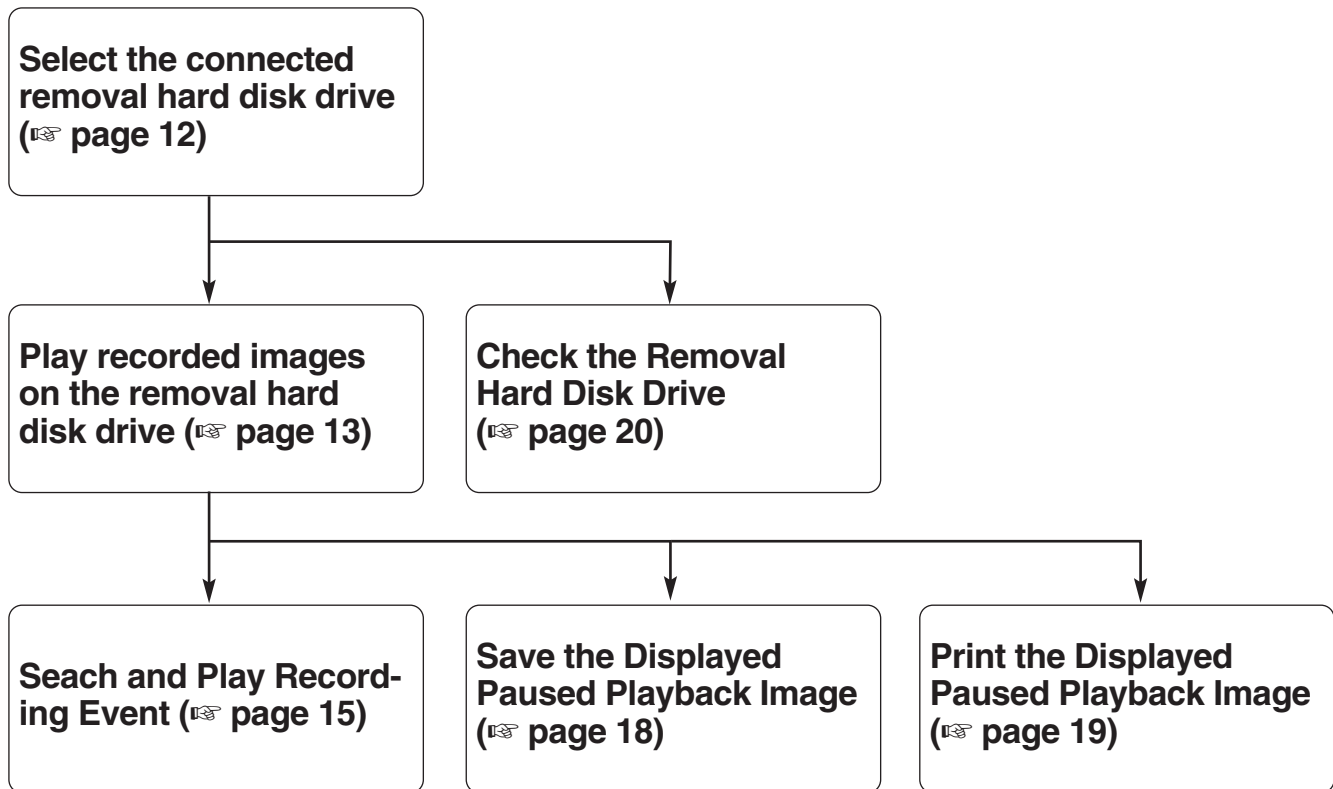
Recording event list

A list of recording events will be displayed.

Playback image display area

Playback images will be displayed in this area. Various playback functions are available using the buttons located below the playback image display area. The current playback point will be indicated by the pointer on the slider.

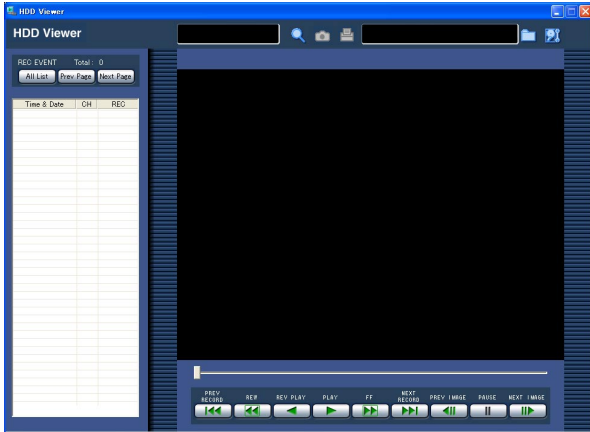
Operations Flow



Select the connected removal hard disk drive

Screenshot 1

Start operation from the operation window displayed just after this software is started.

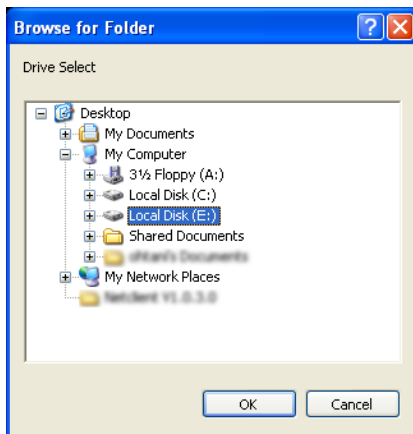


Step 1

Click the [HDD select] button.

Screenshot 2

The "Browse for Folder" window will be displayed.



Step 2

Click the [HDD select] button, and then select the removal hard disk drive connected with the PC displayed as "Local Disk (*)" under "My Computer".

Note:

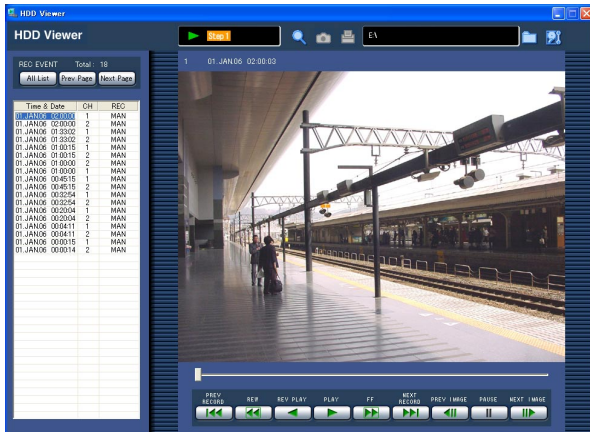
"*" varies depending on the system configuration of the PC.

→ The path of the selected removable hard disk drive will be displayed in the HDD path display area on the tool bar.

Play recorded images on the removal hard disk drive


Screenshot 1

Start operation from the operation window after selecting the connected removable hard disk drive.



Step 1





Click the [PLAY] button.






→ Playback of recorded images will start.  will be displayed in the status display area.

Notes:

- The pointer on the slider will indicate the current playback point.
- When playback is started by selecting a recording event listed in the search result, the selected recording event in the search result list will remain selected even when playback of the next recording event starts. (The recording event currently being played will not be highlighted in the search result list if it is not the selected recording event from the search result list.)

Descriptions of the playback operation buttons

REV PLAY		<ul style="list-style-type: none"> • Reverse playback will start.
Pausing		<ul style="list-style-type: none"> • Playback will be stopped when this button is clicked during playback.
Frame play/reverse frame play	 	<ul style="list-style-type: none"> • The frame display and the reverse frame display are available only during playback or pause. • When the [NEXT IMAGE] button is clicked, the next frame is played and paused. • When the [PREV IMAGE] button is clicked, the previous frame is played and paused. <p>Note: When the image currently being played is in MPEG-4 format, some frames of recorded images will not be displayed. Reverse frame play will be performed with the set refresh interval of the camera.</p>

<p>Fast playback/fast reverse playback</p>	 	<ul style="list-style-type: none"> • Playback speed will be changed in the following order each time the [FF] button is clicked: Step2 (Approx. 4x) → Step3 (Approx. 8x) → Step4 (Approx. 16x) → Step5 (Approx. 32x) → Step6 (Approx. 48x) → Step7 (Approx. 96x) • Reverse playback speed will be changed in the following order each time the [REW] button is clicked: Step2 (Approx. 4x) → Step3 (Approx. 8x) → Step4 (Approx. 16x) → Step5 (Approx. 32x) → Step6 (Approx. 48x) → Step7 (Approx. 96x) • When the [PLAY] button or the [REV PLAY] button is clicked during fast playback/fast reverse playback, playback speed will return to the normal playback speed. <hr/> <p>Note: When the image currently being played is in MPEG-4 format, some frames of recorded images will not be displayed. Fast playback/fast reverse playback will be performed with the set refresh interval of the camera.</p>
<p>Skip/reverse skip</p>	 	<ul style="list-style-type: none"> • When the [NEXT RECORD] button is clicked, playback is skipped to the recorded image of the next event. • When the [PREV RECORD] button is clicked, playback is skipped to the recorded image of the previous event. • When there is no recorded image to be skipped to, the current playback will continue, but the playback may start from a point around a minute before the last playback point.
<p>Slider</p>		<ul style="list-style-type: none"> • The current playback point will be indicated by the pointer on the slider. It is possible to move the playback point to the desired point by moving the pointer during playback. (The playback image at the moved point will be paused.) Click the [PLAY] button to start playback from the moved point.

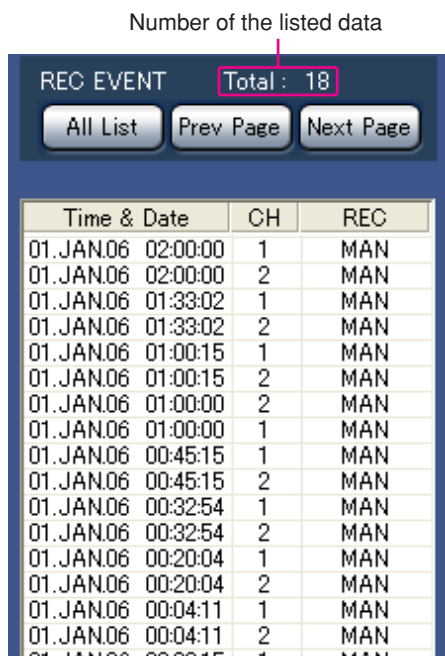
Search and Play Recording Event

Search for a recording event and play it (recording event search).
Recording events can be searched by filtering as follows.

About filtering

Conditions for filtering	How to search
DATE	Designate a time period and search images recorded in the designated period to play.
Event	Searches for images from the selected recording mode only. The following recording modes can be selected. Manual: Manual recording (📄 Operating instructions (PDF)) Schedule: Schedule recording (📄 Setup instructions (PDF)) Emergency: Emergency recording (📄 Setup instructions (PDF)) Site alarm: Recording at a site alarm occurrence (📄 Operating instructions (PDF)) Terminal alarm: Recording at a terminal alarm occurrence (📄 Operating instructions (PDF)) Command alarm: Recording at a command alarm occurrence (📄 Operating instructions (PDF)) SD memory: SD memory data (📄 Setup instructions (PDF))
Camera	Searches for images from the selected camera channel.

About displaying the recording event list window



Number of the listed data: The total number of the listed data will be displayed.

[All List] button: Cancels filtering and lists all recording events.

[Prev Page] button: Displays the previous page of the list.

[Next Page] button: Displays the next page of the list.

Time & Date: Start time of recording will be displayed.

CH: A camera channel currently used for recording will be displayed. Recorded images of the displayed camera channel will be played on a single screen.

REC: Recording mode will be displayed.

MAN: Manual Recording

SCH: Schedule recording

EMR: Emergency recording

TRM: Recording at a terminal alarm occurrence

COM: Recording at a command alarm occurrence

CAM: Site alarm

PRE: Pre-event recording

SD: SD memory data

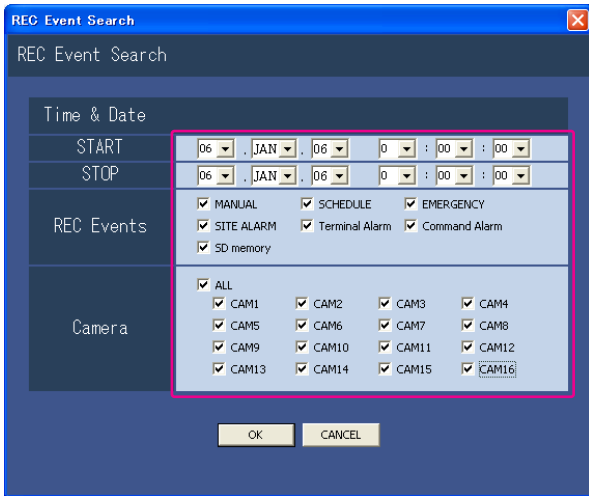
Note:

When the [All List] button is clicked during playback, playback will stop and the filtering will be canceled.

How to operate

Screenshot 1

Click the [Search] button. The "REC Event Search" window is displayed.



Step 1

Select searching conditions.

"Time & Date"

Filter by time and date. Select a start time and an end time by clicking the [V] button.

"REC Events"

Filter by recording event. Check the radio button of the desired recording event to be displayed when filtering by recording events.

"Camera"

Filter by camera channel. Check the radio button of the desired camera channel to be searched for.

Step 2

Click the [OK] button.

→ **FILTERING** will be displayed in the status display area, and then the filtered result will be displayed.

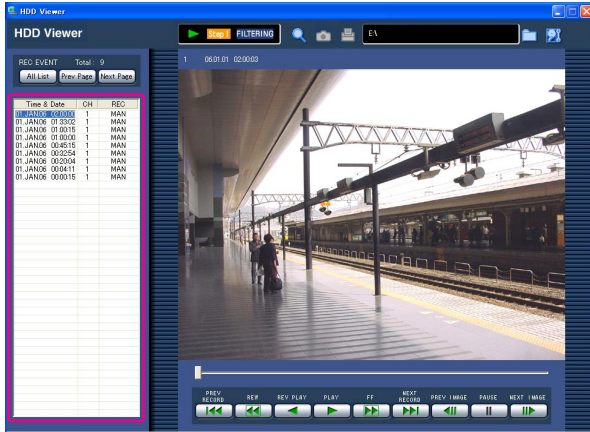
Note:

Click the [All List] button to cancel the filtering.

FILTERING will go off and all recording events will be listed.

Screenshot 2

The search results (recording event list) will be displayed.



Step 3

Click the time of the desired recording event.

→ Play a recorded image of the recording event from the selected time.

Note:

Playback of SD memory data

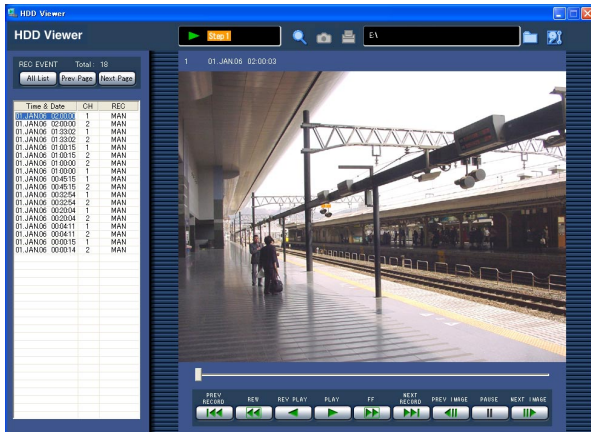
When a recorded image of the recording event contains not many frames to play smoothly, a black screen may be displayed or it may take time to refresh images. In this case, display the image with frame playback/reverse frame playback.

Save the Displayed Paused Playback Image

Saving the displayed image as a jpeg file (extension: jpg) is available only when the image is paused.

Screenshot 1

Start operation when playing the images.



Step 1

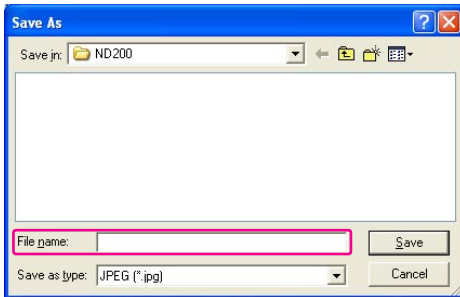
Click the [PAUSE] button.

Step 2

Click the [Save] button.

Screenshot 2

The "Save As" window will be displayed.



Step 3

Enter the file name and select "JPG (*.jpg)" for "Save as type".

Step 4

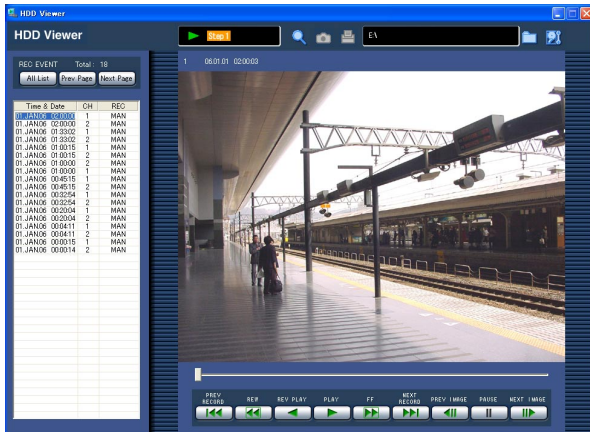
Designate the folder and click the [Save] button.
→ The image data will be saved.

Print the Displayed Paused Playback Image

Print the paused image as follows.

Screenshot 1

Start operation when playing the images.



Step 1

Click the [PAUSE] button.

Step 2

Click the [Print] button.

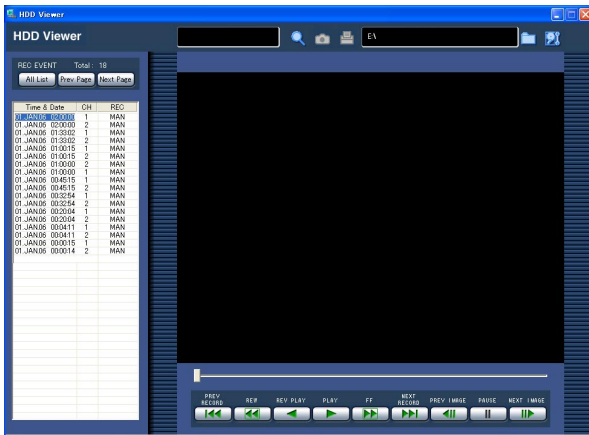
Check the Removal Hard Disk Drive

When it is necessary to check the removable hard disk drive, do as follows.

When the removable hard disk drive is to be removed and stored for a long time, check it using this function on a monthly basis as maintenance.

Screenshot 1

Start operation from the operation window after selecting the connected removable hard disk drive.

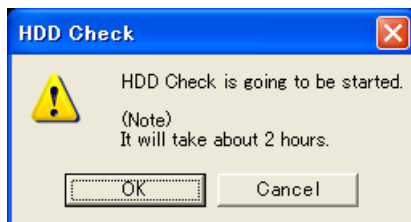


Step 1

Click the [HDD check] button.

Screenshot 2

The confirmation window will be displayed.



Step 2

Click the [OK] button.

→ The HDD check will start.

Important:

- It will take for around 2 hours to complete the HDD check if the disk size is 120 GB.
- When an error occurs during the HDD check, the error notification window will be displayed and the HDD check will stop. In this case, contact your dealer.
- Do not disconnect the removable hard disk drive during the HDD check. When the hard disk drive is removed in the process of the HDD check, the hard disk may be damaged or an error may occur in the PC. When an error occurred in the PC, reboot the PC.

Troubleshooting

Before asking for repairs, check the symptoms with the following table.

Contact your dealer if a problem cannot be solved even after checking and trying the solution or if the problem is not described below.

Symptom	Cause/solution	Reference page
The connected removable hard disk drive is not recognized.	<ul style="list-style-type: none"> • Is the removable hard disk drive connected correctly and firmly? • Is the recommended interface cable used to connect between the PC and the removable hard disk drive? Contact your dealer about the interface cable to be used to connect the removable hard disk drive and the PC. 	–
No data is displayed in the recording event list.	<ul style="list-style-type: none"> • Has the connected removable hard disk been used for recording on the WJ-ND200? 	–
Cannot display the operation window.	<ul style="list-style-type: none"> • Is ActiveX control installed? Make sure that ActiveX control is installed on the PC in use. 	–

Information on Disposal for Users of Waste Electrical & Electronic Equipment (private households)



This symbol on the products and/or accompanying documents means that used electrical and electronic products should not be mixed with general household waste.

For proper treatment, recovery and recycling, please take these products to designated collection points, where they will be accepted on a free of charge basis. Alternatively, in some countries you may be able to return your products to your local retailer upon the purchase of an equivalent new product.

Disposing of this product correctly will help to save valuable resources and prevent any potential negative effects on human health and the environment which could otherwise arise from inappropriate waste handling. Please contact your local authority

for further details of your nearest designated collection point.

Penalties may be applicable for incorrect disposal of this waste, in accordance with national legislation.

For business users in the European Union

If you wish to discard electrical and electronic equipment, please contact your dealer or supplier for further information.

Information on Disposal in other Countries outside the European Union

This symbol is only valid in the European Union.

If you wish to discard this product, please contact your local authorities or dealer and ask for the correct method of disposal.

For U.S., Canadian and Puerto Rican fields:

Panasonic System Solutions Company,
Unit Company of Panasonic Corporation of North America
Security Systems

www.panasonic.com/security

For customer support, call 1.877.733.3689

Executive Office: Three Panasonic Way 2H-2, Secaucus, New Jersey 07094

Zone Office

Eastern: Three Panasonic Way, Secaucus, New Jersey 07094

Central: 1707 N. Randal Road, Elgin, IL 60123

Southern: 1225 Northbrook Parkway, Suwanee, GA 30024

Western: 6550 Katella Ave., Cypress, CA 90630

Panasonic Canada Inc.

5770 Ambler Drive, Mississauga,
Ontario, L4W 2T3 Canada (905)624-5010
<http://www.panasonic.ca>

Panasonic Sales Company

Division of Panasonic Puerto Rico Inc.
San Gabriel Industrial Park 65th Infantry Ave. KM. 9.5 Carolina
P.R. 00985(809)750-4300

For European and other fields:

Matsushita Electric Industrial Co., Ltd.

Osaka, Japan

<http://panasonic.net/>